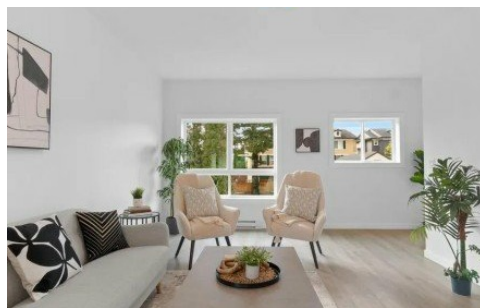


6-1655 Rosedale No 9 Highway
Agassiz, BC V0M 1A2



Powered by homes.theprogress.com

MLS# R2989595



\$648,000

3 Bedrooms | 2 Bathrooms | 1,536 Sqft

Welcome home to MountView, a lovely centrally located complex in the heart of Agassiz. Featuring quartz counter tops, stainless kitchen appliances, a large island & an excellent open plan with a balcony off of the kitchen. Upstairs, find the primary bedroom with ensuite plus a laundry room, 2 more bedrooms & another full bathroom are available for family & friends. With an extra storage room on the garage level, EV ready, tandem parking in the 10'10 x 38' garage & a fenced yard, this could be your new home! An easy walk to shopping, restaurants, schools & recreation. Only a 10 minute drive to Harrison Hot Springs & a 15 minute drive to Chilliwack. Make this home yours today! NOTE: First time buyers NO GST (if qualified) & sliding scale PTT. Ask for details!



Royal LePage Wheeler Cheam Realty

Phone: (604) 792-0077

Royal LePage

Office: (604) 792-0077

For full listing details, please scan:

