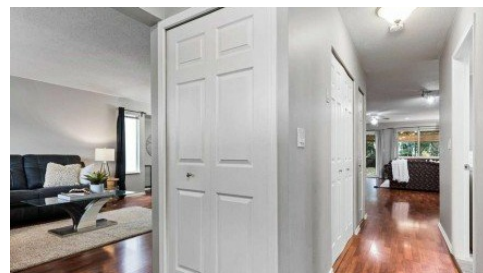


7211 Circle Drive
Chilliwack, BC V2R 2S6



Powered by homes.theprogress.com

MLS# R3013802



\$899,900

4 Bedrooms | 2 Bathrooms | 2,221 Sqft

Nestled around Spruce Grove Park, this spacious & updated 4 bed family home has the ultimate location in a quiet central neighborhood plus easy access to all levels of schools, shopping & Hwy 1. Offering formal living/dining rooms, eat-in updated kitchen plus oversized family room including space for kids play area or secondary seating area. Recent updates include renovated baths, roof 2015, hot water tank 2021 & modern paint colors. Upstairs boasts 4 bedrooms & loft area perfect for kids' hangout space or enclose for a 5th bedroom. Tons of storage throughout the home including crawl space & mud room makes this the perfect home for upsizing from a townhome to enjoy your own fully fenced backyard or downsizing when you still want space but easy living & a great value!



Kristina Legault

Phone: (604) 970-1380

eXp Realty

Office: (604) 793-7686

For full listing details, please scan:

