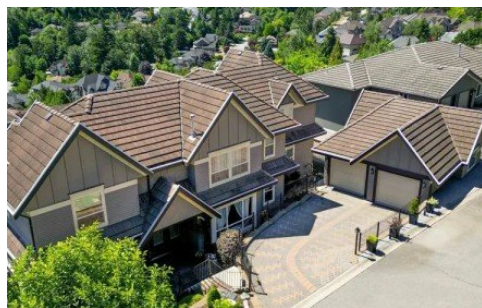


35988 Empress Lane E
Abbotsford, BC V3G 1L2



Powered by homes.theprogress.com

MLS# R3025017



\$1,699,000

7 Bedrooms | 3 Bathrooms | 4,319 Sqft

Perched in desirable East Abbotsford, this stunning 7 bed, 4 bath home boasts breathtaking views of Mt. Baker and the valley. Designed specifically for this lot, every room features large windows and is flooded with natural light. The massive 3 bedroom suite is perfect for extended family or as an income helper. Quietly tucked at the end of a no-through lane, enjoy peace, privacy, and views from multiple patios, decks, and a massive private balcony off the luxurious primary suite. The front courtyard and beautifully landscaped garden oasis with fruit trees, walking path, and second road frontage make this home truly one-of-a-kind. Rarely available act fast!



Royal LePage Wheeler Cheam Realty

Phone: (604) 792-0077

Royal LePage

Office: (604) 792-0077

For full listing details, please scan:

