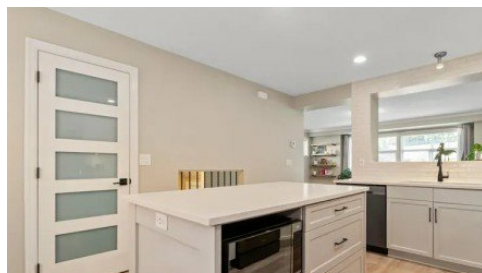


42-5648 Promontory Road
Chilliwack, BC V2R 0E5



Powered by homes.theprogress.com

MLS# R3025901



\$719,900

3 Bedrooms | 2 Bathrooms | 1,808 Sqft

Welcome to the Gabbles at Copper Creek!! This home is in one of the best location in the complex with a huge fully fenced yard. Also a very safe area, away from traffic in the complex. Private front entry. Bright large kitchen with fresh new cupboards and quartz counter tops, beautiful backsplash, and a generous eating area. Patio doors step out to the back yard from the dining area where you can keep an eye on the kids/and or pets. Den or children's play room on the main floor. Custom floor to ceiling rock fireplace in the living room and lots of windows across the front of the house. There are 3 bedrooms up including laundry. Lower level has a great recreation room and 2 piece bathroom. Drive way will accommodate 2 vehicles with an additional of 2 more in the garage.



Royal LePage Wheeler Cheam Realty

Phone: (604) 792-0077

Royal LePage

Office: (604) 792-0077

For full listing details, please scan:

