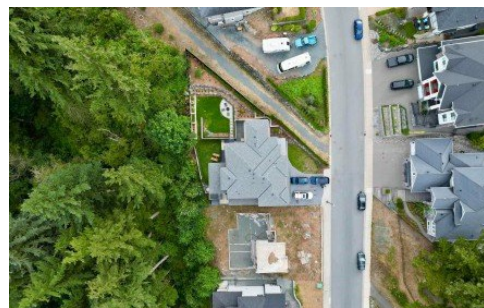


5482 Crimson Ridge
Chilliwack, V2R 6H7



Powered by homes.theprogress.com

MLS# R3036068



\$699,900

Opportunity knocks on the elite street of Crimson Ridge in one of Promontory's most sought-after neighbourhoods. This 7,300+ square foot lot has the foundation poured already and is waiting to be finished into a stunning home with amazing views! Building plans are available upon an accepted offer. Plans are to build a 4,000+ square foot 2-storey home with a basement and suite. Lot sizes are approximate and to be verified by the buyers or the buyer's agent.



Latham Team

Phone: (604) 791-6885

RE/MAX Nyda Realty

Office: (604) 858-7179

For full listing details, please scan:

