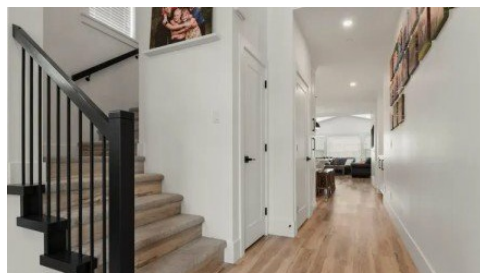


36-46211 Promontory Road
Chilliwack, BC V2R 6E4



Powered by homes.theprogress.com

MLS# R3039010



\$1,124,900

5 Bedrooms | 3 Bathrooms | 3,535 Sqft

Georgious 5 B/R 3.5 Bath home in the desirable Iron Horse Development. Main floor features: open concept eating/living area with a N/G F/P & custom surround millwork, Lg bright kitchen, S/S appliances, gas stove, w island & eating bar, outside a covered patio looks over fully landscaped fenced private yard, Large Primary B/R, W/I closet w builtin organizers, ensuite w double sinks. Upstairs are 2 B/R's, a spacious loft & 4 piece bath. Downstairs are 2 additional B/R's that could be a legal suite with separate entrance, PLUS A HUGE BONUS BUNKER & office space. Beautiful Iron Horse park is a year round gathering place. Tons of amenities & all levels of schools are within walking distance or a short drive. LOCATION, LOCATION, LOCATION!!!



Royal LePage Wheeler Cheam Realty

Phone: (604) 792-0077

Royal LePage

Office: (604) 792-0077

For full listing details, please scan:

