

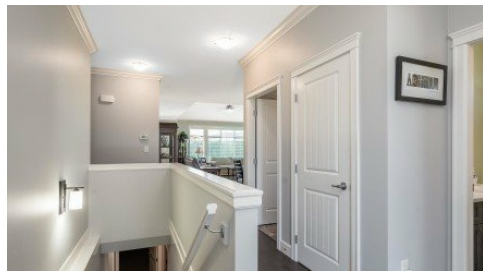
**28 45900 South Sumas Road**  
Chilliwack, V2R 0S9



HOMELIFE  
ADVANTAGE REALTY  
(CENTRAL VALLEY) LTD

Powered by [homes.theprogress.com](https://homes.theprogress.com)

**MLS# R3040176**



**\$889,200**

**3 Bedrooms | 3 Bathrooms | 3,548 Sqft**

Welcome to Evergreen at Ensley, a well sought-after 45+ gated community. This beautiful 3,548 sq.ft. rancher with large basement is perfectly situated on one of the largest lots in the complex. Step inside to an inviting open concept layout featuring soaring vaulted ceilings in the great room, a cozy gas fireplace and an abundance of natural light from the many windows. The spacious kitchen boasts a large island with eating bar, two pantries and plenty of counter space. Ideal for both everyday living and entertaining. The primary suite on the main floor offers a walk-in closet & ensuite with the convenience of the laundry room and a bright den/office on the main level. The basement has incredible flexibility with a bedroom, family room, recreation room, living room and storage. A must see!



**Hanne Selby**

Phone: (604) 795-0280

HomeLife Advantage Realty (Central Valley) Ltd

Office: (604) 793-6598

For full listing details, please scan:

