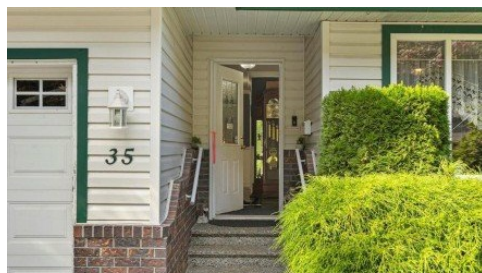


35 34250 Hazelwood Avenue
Abbotsford, V2S 7L4



Powered by homes.theprogress.com

MLS# R3051312



\$973,999

4 Bedrooms | 3 Bathrooms | 3,022 Sqft

Welcome to Still Creek! Rarely available and once an ex-show home, this end-unit TH sits on the largest lot in the complex. With over 3,000 sq.ft, 4 bed, and 3 baths, there's ample space for your family. The main floor features the primary suite + two additional bedrooms, a functional kitchen that opens to the family room with a cozy gas fireplace, and a spacious living and dining area. Step outside to a comfortable balcony and low-maintenance patio, ideal for relaxing or entertaining. The lower level offers a fourth bedroom and flexible space for guests, hobbies, or recreation. A double garage and nearby visitor parking add convenience. Well cared for, in a family-friendly community close to schools, parks, shopping, transit, and highways. Bring your family, this home is ready for you!



Latham Team

Phone: (604) 791-6885

RE/MAX Nyda Realty

Office: (604) 858-7179

For full listing details, please scan:

