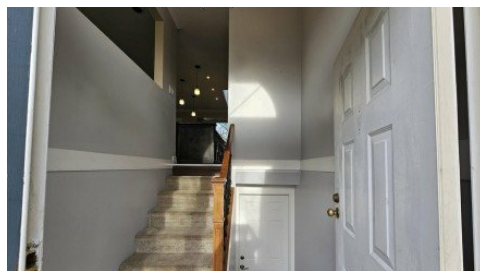


**32985 Malahat Pl - A**  
Abbotsford, BC V2S 7B8



Powered by [homes.theprogress.com](https://homes.theprogress.com)



**\$2,750**

**3 Bedrooms | 2 Bathrooms | 1,146 Sqft**

Address: A - 32985 Malahat Place, Abbotsford BC V2S 7B8 Date Available: Immediately Site: [www.selectrealestate.ca/property-management](https://www.selectrealestate.ca/property-management) Located on quiet Malahat Place in Abbotsford, this bright and spacious 3-bed, 2-bath upper suite offers comfortable living in a family-friendly neighbourhood. The home features an open-concept main floor with large windows, an updated kitchen with plenty of counter space, a cozy fireplace, and generous bedrooms. Enjoy a large backyard with an expansive deck backing onto greenspace perfect for relaxing or entertaining. Shared laundry is located in the garage, with the upper tenant having exclusive use of one garage bay plus street parking. Close to schools, parks, shopping, and major commuter routes. Lease Details Lease duration: 1 Year Deposit: Months Rent. No Smoking Property Details Bed: 3 Bath: 2 SQFT: 1146 Pet Details Pets(Yes/No): No Type Allowed: None Number: 0 Size Restriction: N/A Exterior Details BBQs allowed(yes/no): Yes Parking type and how many: Garage (1 side) + Street Yard Usage: Shared Yard Yard fully fenced: Yes Shed Or Shop Usage: No Appliances Included Fridge: Yes Range: Yes Dishwasher: Yes Microwave: Yes Washer/Dryer: Yes Shared Laundry: Yes Pay Laundry: No Fireplace: Yes Air conditioner: No Standalone freezer: No Utilities Gas: 60% Tenant



**Select Real Estate Chilliwack Office**

Phone: (604) 393-7880

Select Real Estate

Office: (604) 393-7880

For full listing details, please scan:

