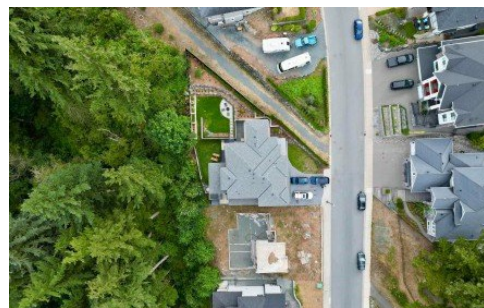


5482 Crimson Ridge
Chilliwack, V2R 6H7



Powered by homes.theprogress.com

MLS# R3076686



\$749,900

Rare opportunity on prestigious Crimson Ridge! This 7,300+ sq ft lot already has the foundation poured and is ready for completion. Building plans available upon accepted offer for a 4,000+ sq ft two-storey home with basement and suite potential, plus valley and mountain views. Prime Promontory location surrounded by quality homes.



Latham Team

Phone: (604) 791-6885

RE/MAX Nyda Realty

Office: (604) 858-7179

For full listing details, please scan:

