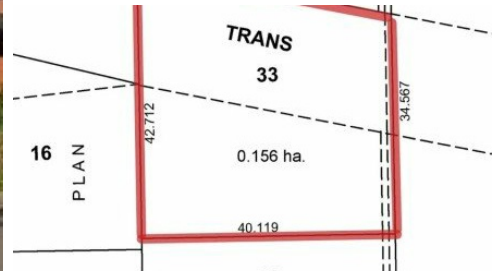


**10001 Magnolia Place**  
Rosedale, BC V0X 1X1



Powered by [homes.theprogress.com](https://homes.theprogress.com)

**MLS# R3078614**



**\$639,000**

**1 Bathroom**

Now available, a massive lot in the Gardens, ready for your plans & ideas. Don't wait on this showpiece lot over 16,000 sq. ft. tucked away in the Magnolia cul-de-sac. Build your dream home on this private parcel amid nature's splendor. All services, including sewer. Come take a drive to the Gardens and see what the future holds. And check out the beautiful park concept in the associated documents.



**Royal LePage Wheeler Cheam Realty**

Phone: (604) 792-0077

Royal LePage

Office: (604) 792-0077

For full listing details, please scan:

