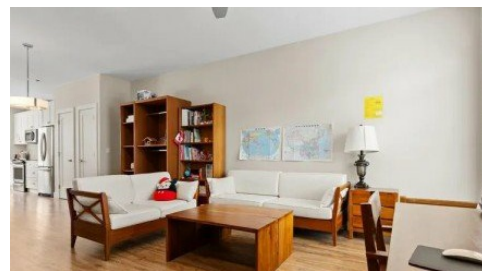


45615 Tamihi Way 23
Chilliwack, BC V2R 0X4



Powered by homes.theprogress.com

MLS# R3085532



\$659,900

3 Bedrooms | 3 Bathrooms | 1,603 Sqft

EDGEMONT TOWNHOME IN SOUGHT AFTER GARRISON CROSSING! Home has spacious & open floor plan with 3 bedrooms + den/flex space, 3 bathrooms & double car garage with room in driveway for 2 more. Features include: stone countertops, S/S appliances, large kitchen island, F/P, balcony & patio. Close to parks for the kids, rec centre with gym, pool & splash park, dining, grocery shopping & many more amenities incl the world famous Vedder River & Rotary Trail! Town & freeway are just a few minute s drive. Call to view!



Sabrina vandenBrink *PREC

Phone: (604) 858-1857

HomeLife Advantage Realty Ltd

Office: (604) 575-3130

For full listing details, please scan:

