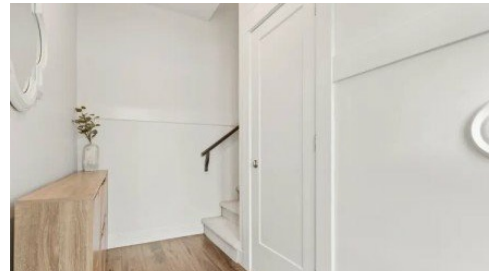


**1-6262 Rexford Drive**  
Chilliwack, BC V2R 6B4



Powered by [homes.theprogress.com](https://homes.theprogress.com)

**MLS# R3087748**



**\$999,000**

**4 Bedrooms | 3 Bathrooms | 2,492 Sqft**

Welcome to this beautifully designed three-level home offering space, flexibility, and STUNNING VALLEY VIEWS. The main floor features a bright, open layout with den and laundry, ideal for everyday living and working from home. Step outside to a private backyard with hot tub, or take in the views from the large front deck. Upstairs offers three generous bedrooms, including a comfortable primary retreat. The lower level includes an unauthorized, fully furnished one-bedroom basement suite with its own living space perfect for extended family, guests, or mortgage helper potential. Thoughtfully laid out, this suite adds exceptional value and versatility. Functional, flexible, and beautifully located this home delivers lifestyle and value in one complete package. Don't miss it.



**Royal LePage Wheeler Cheam Realty**

Phone: (604) 792-0077

Royal LePage

Office: (604) 792-0077

For full listing details, please scan:

