

46360 Valleyview Road 166
Chilliwack, BC V2R 0X9

CENTURY 21
Creekside Realty Ltd.

Powered by homes.theprogress.com

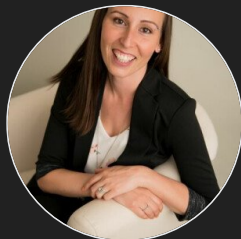
MLS# R2641061



\$679,900

3 Bedrooms | 3 Bathrooms | 1,460 Sqft

Incredible 3 bed / 2 bath townhome in picturesque Promontory Heights! Modern, Spacious, Open concept main level floor-plan with cozy N/G fireplace & forced air heat featuring a walkout to backyard patio space peering onto lush greenery & Apple Creek! Beautiful and freshly installed vinyl plank flooring (w/ New Baseboard & Trim!) throughout majority of the home with brand new carpet on the stairs. Brand NEW SS appliances in the kitchen with new paint, light fixtures, NEW N/G HW tank & more! Double garage has lots of extra storage, a workshop space and leads to amazing 3' crawl accessing under entire main floor. Apple Creek Complex is steps from desirable Promontory Elementary, is pet friendly with no rentals allowed. Start your New Year with a New Move!



Dustin Hurley

Phone: (604) 316-9807 (604) 846-7355 (604) 855-8060

Century 21 Creekside Realty
Office: (604) 846-7355

For full listing details, please scan:

