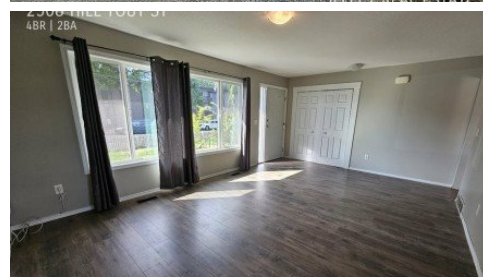


2508 Hill Tout St
Abbotsford, BC V2T 2P9



Powered by homes.theprogress.com



\$2,600

4 Bedrooms | 2 Bathrooms | 2,100 Sqft

Address: 2508 Hill Tout Street, Abbotsford BC V2T 2P9 Date Available: September 22nd, 2025 Site: www.selectrealestate.ca/property-management Description Spacious 4-bedroom, 2-bathroom home at 2508 Hill Tout in Abbotsford, featuring three living areas, a large garage, and brand new paint and flooring throughout. The modern kitchen and open-concept layout make it perfect for families or entertaining. Conveniently located near schools, parks, shopping, and transit. Available for immediate occupancy book a viewing today! Lease Details Lease duration: 1 Year Deposit: Months Rent. No Smoking Property Details Bed: 4 Bath: 2 SQFT: 2100 Pet Details Pets(Yes/No): No Type Allowed: N/A Number: 0 Size Restriction: N/A Exterior Details BBQs allowed(yes/no): Yes Parking type and how many: Driveway + Garage (3 spaces total) Yard Usage: Private Yard Yard fully fenced: Yes Shed Or Shop Usage: Yes Appliances Included Fridge: Yes Range: Yes Dishwasher: Yes Microwave: No Washer/Dryer: Yes Shared Laundry: No Pay Laundry: No Fireplace: No Air conditioner: No Standalone freezer: No Utilities Gas: 100% Tenant Hydro: 100% Tenant Internet/Cable: 100% Tenant Water, Sewer, Garbage: 100% Tenant Utility Type Heat Source: Gas Furnace Septic/Sewer: Sewer Water Source: City Tenant Responsible for Septic



Select Real Estate Chilliwack Office

Phone: (604) 393-7880

Select Real Estate

Office: (604) 393-7880

For full listing details, please scan:

